

The way we see it (and hear it) we aren't just making superb home audio equipment—we're making our customers' lives better. Sure, the pieces we build deliver stunning, amazing audio—sound beautiful enough to make your living room pulse like a concert hall and your home theater rumble like a Hollywood studio. But it's that loftier goal—the goal of improving lives and making people happy—that drives us and fires our passion.

## AUTHORISED INTEGRATOR PRICE LIST

Confidential - January 2018

Home Theatre Preamp Processors & AV Receivers											RRP incl VAT	
Model	Channels	Power Rating	Dolby Atmos	Dirac Live Room Correction	4K Ultra HDMI 2.0a HDCP 2.2	Video Inputs	Audio Inputs	Rack Size	Audio Outputs		RRP	
Maestro M9	7.1.4 processor	N/A	Y	Y	Y	7x HDMI	HDMI / Coax SPDIF / Toslink / XLR / RCA / USB	4U	XLR / RCA / Headphone	R	179 990,00	
Maestro M5	7.1.4 processor	N/A	Y	Y	Y	7x HDMI	HDMI / Coax SPDIF / Toslink / XLR / RCA / USB	4U	XLR / RCA / Headphone	R	119 990,00	
Concert AVR-9	7.1.4 receiver	100W @ 8Ω 180W @ 4Ω	Y	Y	Y	7x HDMI	HDMI / Coax SPDIF / Toslink / RCA / USB	4U	RCA / Headphone	R	119 990,00	
Concert AVR-7	7.1.4 receiver	90W @ 8Ω/4Ω	Y	Y	Y	7x HDMI	HDMI / Coax SPDIF / Toslink / RCA / USB	4U	RCA / Headphone	R	79 990,00	
Mounting Options		Features							Finish		RRP	
RM-012	Rack mounts	For Maestro M9, Concert AVR-9, Concert AVR-7							Black		\$199	
Theatre Amplifiers											RRP	
Model	Channels	Power Rating	Minimum Speaker Load	12V Trigger	Damping Factor	Signal to Noise	THD	Rack Size	Outputs	Inputs	RRP	
Savoy G3	7	203W @ 8Ω	4Ω	Y	>450	>110 dB	0,08%	4U	7 x RCA	7 x XLR RCA	R	69 990,00
Pantages G3	5	230W @ 8Ω	4Ω	Y	>250	>110 dB	0,05%	3U	N/A	5 x XLR RCA	R	59 990,00
Mounting Options		Features							Finish		RRP	
RM-199	Rack mounts	For Savoy G3							Black		TBA	
RM-195	Rack mounts	For Pantages G3							Black		TBA	
Network DSP Matrix Amplifiers											RRP	
Model	Channels	Power Rating	Bridgeable	Minimum Speaker Load	Finish Options	EQ / DSP	Rack Size	Pass-through and Bus Outputs	Inputs	RRP		
Model M6800	16	100W @ 8Ω 200W @ 4Ω	400W	4Ω	Espresso Black Brushed Aluminum	DSP	2U	8x Stereo 2x Digital	8x Local Stereo 2x Coax Bus/Aux 2x Opt. Bus/Aux	R	119 990,00	
Model M4840	8	100W @ 8Ω 200W @ 4Ω	400W	4Ω	Espresso Black	DSP	2U	2x Coax Bus 4x Combo Coax/Opt.	4x Local Stereo 4x Combo Coax / Opt. Inputs	R	59 990,00	
Model M4800	8	100W @ 8Ω 200W @ 4Ω	400W	4Ω	Espresso Black Brushed Aluminum	DSP	1U	2x Digital	4x Local Stereo 4x Coax Bus/Aux 4x Opt. Bus/Aux	R	59 990,00	

Network DSP Multichannel Amplifiers										
Model	Channels	Power Rating	Bridgeable	Minimum Speaker Load	Finish Options	EQ / DSP	Rack Size	Bus Outputs	Inputs	
Model D4400	16	100W @ 8Ω 200W @ 4Ω	400W	4Ω	Espresso Black Brushed Aluminum	DSP	3U	1x Stereo	8x Local Stereo Stereo Bus/Aux	2x Stereo Bus/Aux

RRP
99 990,00

High Power Architect Multichannel Amplifiers										
Model	Channels	Power Rating	Bridgeable	Minimum Speaker Load	12V Trigger	Bus / Aux	EQ / DSP	Rack Size	Bus Outputs	Inputs
Model P2660	16	100W @ 8Ω 200W @ 4Ω	400W	4Ω	Y	Y	N	2U	1x Stereo	8x Local Stereo Stereo Bus/Aux 1x Digital Bus/Aux
Model P2260	12	100W @ 8Ω 200W @ 4Ω	400W	4Ω	Y	Y	N	2U	1x Stereo	6x Local Stereo Stereo Bus/Aux 1x Digital Bus/Aux
Model P800	8	100W @ 8Ω 200W @ 4Ω	400W	4Ω	Y	Y	N	1U	1x Stereo	4x Local Stereo Stereo Bus/Aux 1x Digital Bus/Aux
Model 2660	16	65W @ 8Ω 100W @ 4Ω	175W	4Ω	Y	Y	N	2U	No	8x Local Stereo Stereo Bus/Aux 1x Digital Bus/Aux

RRP
74 990,00
54 990,00
39 990,00
64 990,00

Compact Home Audio Amplifiers / Zone Amplifiers										
Model	Channels	Power Rating	Bridgeable	IR / RS 232 Control	12V Trigger	Sub out	Cross-over	Volume Control	Finish	Inputs
Rialto 400	2	100W @ 8Ω 200W @ 4Ω	400W	N	Y	Y	N	N	White Black	1x Analog Digital 1x Speaker Level
Rialto 600	2	100W @ 8Ω 200W @ 4Ω	400W	Y	Y	Y	Y	Y	White Black	1x Analog Digital 2x
Bijou 600	2	100W @ 8Ω 200W @ 4Ω	400W	Y	Y	Y	Y	Y	Black	1x Analog Digital 2x

RRP
17 990,00
18 990,00
18 990,00

Mounting Options for Bijou 600		Features	Finish
RM-209	Single rack mount kit	Comprises of two custom end plates including a single space filler plate to lock one Bijou 600 into a 1U rack space. Screws included.	Black
RM-210	Dual rack mount kit	Comprises of two Bijou end plates and two middle joining plates to mount two Bijou 600's together in a 1U rack space. Screws included.	Black
RM-211	Mounting brackets	Two Bijou 600 mounting ears to allow the Bijou 600 to be installed on walls or other fixtures where the Bijou 600 requires flat mounting in confined spaces.	Black
RM-212	In-wall black box	In-wall box with perforated rear panel. Uses metal & plastic electrical boxes, retro & new construction, up to 3/4" wallboard. Cut-out: 264mm x 365mm	Black
RM-213	Component mounting plate	Component mounting plate. Fits a 50-400mm VESA mount. Large 9" x 11" (229mm x 279mm) breadboard mounting platform	Black

RRP
TBA
TBA
TBA
TBA
TBA



Audio Analysers	
Model	Description
SA-3052	Realtime Analyser for Home Theatre and Pro Audio
SA-4100i	iOS Test and Measurement Microphone

RRP
TBA
TBA

Home Theatre Preamp Processors & Receivers

**MAESTRO M9**

7.1.4 Channel Processor with Dolby Atmos® and Dirac

Features

- Full 4K at 60Hz; HDMI 2.0a with HDCP 2.2
- HD Surround modes include Dolby Atmos, Dolby True HD, Dolby Digital Plus, DTS-HD Master Audio, DTS:X ready
- Also supported Dolby Digital 5.1, Dolby Digital Stereo Downmix, Dolby Digital 5.1 + Dolby Surround, DTS 5.1, DTS 5.1 Stereo Downmix, DTS-ES 6.1 Matrix, DTS-ES 6.1 Discrete, DTS96/24
- 6x analog, 6x digital, 2x balanced XLR and 1x USB inputs
- 11.1 preamp output (8x balanced XLR outputs), Zone 2 out, headphone out
- **Burr Brown DACs**
- 7 HDMI inputs / 2 HDMI outputs (main zone) + 1 HDMI Zone 2 output
- Dirac Live® Room Correction
- Custom Install control ready with IP, RS232, 12 volt trigger and IR control options
- AudioControl iOS Control App available free on the iTunes Store
- Dimensions (WxDxH): 432mm x 419mm x 178mm (4U); Weight: 42.0lbs (19.05kg)
- New Espresso Black finish



\* Above: Shown with optional mounts



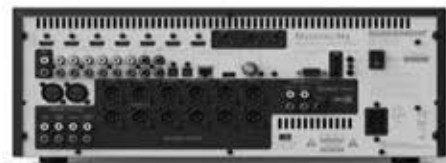
RRP  
R 179 990,00

**MAESTRO M5 *New!***

7.1.4 Channel Processor with Dolby Atmos® and Dirac

Features

- Full 4K at 60Hz; HDMI 2.0a with HDCP 2.2
- Supports transmission of High Dynamic Range (HDR) formats, with BT.2020 support
- HD Surround modes include Dolby Atmos, Dolby True HD, Dolby Digital Plus, DTS-HD Master Audio, DTS:X
- Also supported Dolby Digital 5.1, Dolby Digital Stereo Downmix, Dolby Digital 5.1 + Dolby Surround, DTS 5.1, DTS 5.1 Stereo Downmix, DTS-ES 6.1 Matrix, DTS-ES 6.1 Discrete, DTS96/24
- 6x analog, 6x digital, 1x balanced input
- 12 balanced XLR outputs, Zone 2 out, headphone out
- 7 HDMI inputs / 2 HDMI outputs (main zone) + 1 HDMI Zone 2 output
- USB Input for connection to iPad®, iPhone®, iPod® and mass storage devices
- Dirac Live® Room Correction
- Custom Install control ready with IP, RS232, 12 volt trigger and IR control options
- Dimensions (WxDxH): 432mm x 419mm x 178mm (4U); Weight: 23.9lbs (10.8kg)
- Espresso Black finish



RRP  
R 119 990,00

**CONCERT AVR-9**

7.1.4 Home Theater 4K Ultra HD supporting HDMI 2.0a and HDCP 2.2

Features

- Supports Dolby Atmos® and DTS:X™ ready
- High current power supply
- Seven channels of high-current, 'cool running', Class H amplification deliver 180 watts per channel into 4 ohms, all channels driven; 100 watts per channel into 8 ohms, all channels driven
- Dirac Live® Room Correction
- 7 HDMI; COAX SPDIF x 4; Toslink x 2; RCA Phono x 6
- Dual HDMI outputs (ARC supported)
- HD Surround modes include Dolby Atmos, Dolby True HD, Dolby Digital Plus, DTS-HD Master Audio, DTS:X ready with future firmware update
- Custom Install control ready with IP, RS232, 12 volt trigger and IR control options
- AudioControl iOS Control App available free on the iTunes Store
- Internet radio and music streaming services
- Dimensions (WxDxH): 432mm x 419mm x 178mm (4U); Weight: 48.0lbs (21.8kg)
- New Espresso Black finish



RRP  
R 119 990,00

Home Theatre Preamp Processors & Receivers

**CONCERT AVR-7**

**7.1.4 Home Theater 4K Ultra HD supporting HDMI 2.0a and HDCP 2.2**

**Features**

- Supports Dolby Atmos® and DTS:X™ ready
- Seven channels of high-current, 'cool running', Class H amplification deliver 90 watts per channel into 4 ohms, all channels driven; 90 watts per channel into 8 ohms, all channels driven
- Dirac Live® Room Correction
- 7 HDMI; COAX SPDIF x 4; Toslink x 2; RCA Phono x 6
- Dual HDMI outputs (ARC supported)
- HD Surround modes include Dolby Atmos, Dolby True HD, Dolby Digital Plus, DTS-HD Master Audio, DTS:X ready with future firmware update
- Custom Install control ready with IP, RS232, 12 volt trigger and IR control options
- AudioControl iOS Control App available free on the iTunes Store
- Internet radio and music streaming services
- Dimensions (WxDxH): 432mm x 419mm x 178mm (4U); Weight: 47.0lbs (21.3kg)
- New Espresso Black finish



RRP  
R 79 990,00

RRP  
TBA

Optional RM-012 Rack Mount  
For AVR-7 / AVR-9 / M9

Theatre Amplifiers

**SAVOY G3**

**Seven Channel Home Theater Amplifier**

**Features**

- Outputs over 200 Watts per Channel – all channels driven
- Stable into low impedances
- Unparalleled Energy Efficiency
- High Definition BIMOS Outputs
- Cool Running Class H Operation
- LightDrive Anti-Clipping Protection Circuitry
- High Current Gold Output Terminals
- Selectable Input Sensitivity
- 5-way Binding Posts
- Output Status Display
- Unbalanced RCA and Balanced XLR Audio Inputs
- Bullet-Proof Reliability
- Remote 12 volt Trigger
- Perfect paired with AudioControl's Maestro M9 Preampifier
- Available in Espresso Black finish
- Dimensions: 17"W x 16.5"D x 7"H (4U)
- Weight: 56.0lbs (25.4kg)



RRP  
R 69 990,00

RRP  
TBA

Optional RM-199 Rack Mount  
For Savoy G3

Theatre Amplifiers

**PANTAGES G3**

**Five Channel Home Theater Amplifier**

**Features**

- Outputs 230 Watts per Channel into 8 ohm
- Stable into low impedances
- Unparalleled Energy Efficiency
- High Definition BiMOS Outputs
- Cool Running Class H Operation
- LightDrive Anti-Clipping Protection Circuitry
- High Current Gold Output Terminals
- 5-way Binding Posts
- Output Status Display
- Unbalanced RCA and Balanced XLR Audio Inputs
- Bullet-Proof Reliability
- Remote 12 volt Trigger
- Perfect paired with AudioControl's Maestro M9 Preamplifier
- Available in Espresso Black finish
- Dimensions: 17"W x 15.75"D x 5.25"H (4U)
- Weight: 46.0lbs (20.9kg)



RRP  
 R 59 990,00

**Optional RM-195 Rack Mount**

For Pantages G3

RRP  
 TBA

Network DSP Matrix Amplifiers

**Director Model M6800**

**16 Channel High-Power Network DSP Matrix Amplifier**

**Features**

- Network DHCP Signal Matrix Amplifier With Volume Control
- 16 Channels x 100 Watts at 8 Ohms (All Channels Driven)
- 16 Channels x 200 Watts at 4 Ohms (All Channels Driven)
- Bridgeable to 400 Watts of Bridged Power
- Digital Signal Processing (DSP) Performance
- Built-In Speaker Optimization Profiles
- Ethernet Port for Status Monitoring, Source Switching and 12 Volt Trigger Control
- Built in Matrix Delivering Analog or two digital inputs to be routed to any zone output on single or multiple amplifiers
- Network Programmable Graphic & Parametric Equalization with User Memories
- Assignable Names for All Zones & Amplifier
- Digital Signal Sense
- Programmable Electronic Crossover for Local Subwoofer Applications • Subsonic Filter
- AudioControl LightDrive Anti-Clipping Speaker Protection
- Local Inputs with Pass Thru / Loop Outputs
- Dual Digital Audio Bus Inputs
- Compact 2U Rack Space • includes Rack Mount Brackets
- Available in Espresso Black front
- Brushed Stainless Steel front on special order
- Dimensions (WxDxH): 432mm x 394mm x 89mm (2U)
- Weight: 21lbs (9.5kg)



RRP  
 R 119 990,00

## Network DSP Matrix Amplifiers (cont')

### Director Model M4800

#### 8 Channel High-Power Network DSP Matrix Amplifier

##### Features

- Network DHCP Signal Matrix Amplifier With Volume Control
- 8 Channels x 100 Watts at 8 Ohms (All Channels Driven)
- 8 Channels x 200 Watts at 4 Ohms (All Channels Driven)
- Bridgeable to 400 Watts of Bridged Power
- Digital Signal Processing (DSP) Performance
- Built-In Speaker Optimization Profiles
- Ethernet Port for Status Monitoring, Source Switching and 12 Volt Trigger Control
- Built in Matrix Delivering Analog or two digital inputs to be routed to any zone output on single or multiple amplifiers
- Network Programmable Graphic & Parametric Equalization with User Memories
- Assignable Names for All Zones & Amplifier
- Digital Signal Sense
- Programmable Electronic Crossover for Local Subwoofer Applications • Subsonic Filter
- AudioControl LightDrive Anti-Clipping Speaker Protection
- 4 Stereo Local Inputs plus 4 Digital Local Inputs
- Dual Digital Audio Bus Inputs
- Compact 1U Rack Space • Includes Rack Mount Brackets
- Available in Espresso Black front
- Brushed Stainless Steel front on special order
- Dimensions (WxDxH): 432mm x 401mm x 44mm (1U)
- Weight: 14.7lbs (6.7kg)



RRP  
R 59 990,00

### Director Model M4840 *New!*

#### Shallow-Mount 8 Channel High-Power Network DSP Matrix Amplifier

##### Features

- Network DHCP Signal Matrix Amplifier With Volume Control
- 8 Channels x 100 Watts at 8 Ohms (All Channels Driven)
- 8 Channels x 200 Watts at 4 Ohms (All Channels Driven)
- Bridgeable to 400 Watts of Bridged Power
- Digital Signal Processing (DSP) Performance
- Built-In Speaker Optimization Profiles
- Ethernet Port for Status Monitoring, Source Switching and 12 Volt Trigger Control
- Built in Matrix Delivering Analog or two digital inputs to be routed to any zone output on single or multiple amplifiers
- Network Programmable Graphic & Parametric Equalization with User Memories
- Assignable Names for All Zones & Amplifier
- Digital Signal Sense
- Programmable Electronic Crossover for Local Subwoofer Applications • Subsonic Filter
- AudioControl LightDrive Anti-Clipping Speaker Protection
- 4 Stereo Local Inputs plus 4 Digital Local Inputs
- Dual Digital Audio Bus Inputs
- Shallow mount 2U Rack Space • Includes Rack Mount Brackets
- Available in Espresso Black front
- Dimensions (WxDxH): 432mm x 298mm x 89mm (2U)
- Weight: 16.5lbs (7.5kg)



RRP  
R 59 990,00

Network DSP Multichannel Amplifiers

**Director Model D4400**

**16 Channel Network Power Amplifier with Volume Control**

**Features**

- Network DHCP Control Amplifier With Volume Control
- 16 Channels x 100 Watts at 8 Ohms (All Channels Driven)
- 16 Channels x 200 Watts at 4 Ohms (All Channels Driven)
- Bridgeable for Increased Power Levels
- Digital Signal Processing and Volume Control on All Zones
- Ethernet Port for Status Monitoring, Source Switching and 12 Volt Trigger Control
- Network Programmable Graphic & Parametric Equalization with User Memories
- Assignable Names for Zones & Amplifier
- Digital Signal Sense Across All Channels and Zones
- Programmable Electronic Crossover for Local Subwoofer Applications
- Subsonic Filter
- AudioControl LightDrive Anti-Clipping Speaker Protection
- Local & Dual Bus Inputs Plus Pass Thru
- Compact 3U Rack Space • Includes Rack Brackets
- Available in Espresso Black front
- Brushed Stainless Steel front on special order
- Dimensions (WxDxH): 432mm x 406mm x 133mm (3U)
- Weight: 47.0lbs (21.3kg)



RRP  
 R 99 990,00

High Power Architect Multichannel Amplifiers

**Architect Model P2660**

**16 Channel Multi-Zone High Power Amplifier**

**Features**

- 16 Channels x 100 Watts at 8 Ohms (All Channels Driven)
- 16 Channels x 200 Watts at 4 Ohms (All Channels Driven)
- Bridgeable to 400 Watts of Bridged Power
- Low Standby Current Draw of Less Than 1 Watt
- Compact Design Fits into 2 Rack Spaces
- LightDrive™ Anti-Clipping Protection Circuitry
- 12v Trigger Input and Output; Local Zone Input Trigger
- 2 x Input Buses (Digital and Analog)
- Signal-Sensing On All Channels
- Input Busing and Level Controls
- Beefy Rack Mount Brackets Included
- Available in Espresso Black finish
- Dimensions (WxDxH): 483mm (432mm w/no rack ears) x 394mm x 89mm (2U)
- Weight: 20.5lbs (9.3kg)



RRP  
 R 64 990,00

## High Power Architect Multichannel Amplifiers (cont')

### Architect Model P2260

#### 12 Channel Multi-Zone High Power Amplifier

##### Features

- 12 Channels x 100 Watts at 8 Ohms (All Channels Driven)
- 12 Channels x 200 Watts at 4 Ohms (All Channels Driven)
- Bridgeable to 400 Watts of Bridged Power
- Low Standby Current Draw of Less Than 1 Watt
- Compact Design Fits into 2 Rack Spaces
- LightDrive™ Anti-Clipping Protection Circuitry
- 12v Trigger Input and Output; Local Zone Input Trigger
- 2 x Input Buses (Digital and Analog)
- Signal-Sensing On All Channels
- Input Busing and Level Controls
- Beefy Rack Mount Brackets Included
- Available in Espresso Black finish
- Dimensions (WxDxH): 483mm (432mm w/no rack ears) x 394mm x 89mm (2U)
- Weight: 19.5lbs (8.8kg)



RRP  
R 54 990,00

### Architect Model P800

#### 8 Channel Multi-Zone High Power Amplifier

##### Features

- 8 Channels x 100 Watts at 8 Ohms (All Channels Driven)
- 8 Channels x 200 Watts at 4 Ohms (All Channels Driven)
- Bridgeable to 400 Watts of Bridged Power
- Low Standby Current Draw of Less Than 1 Watt
- Compact Design Fits into 1 Rack Space
- LightDrive™ Anti-Clipping Protection Circuitry
- 12v Trigger Input and Output; Local Zone Input Trigger
- 2 x Input Buses (Digital and Analog)
- Signal-Sensing On All Channels
- Input Busing and Level Controls
- Beefy Rack Mount Brackets Included
- Available in Espresso Black finish
- Dimensions (WxDxH): 483mm (432mm w/no rack ears) x 401mm x 44mm (1U)
- Weight: 15.0lbs (6.8kg)



RRP  
R 39 990,00

## Compact Home Audio Amplifiers / Zone Amplifiers

### RIALTO 400 *Price Drop!*

#### 2.1 Channel Compact Amplifier and DAC

##### Features

- 2 Channels x 100 Watts at 8 Ohms
- 2 Channels x 200 Watts at 4 Ohms
- Stable Down to 3.6 Ohms
- Bridgeable Mono Block at 400 Watts
- 1 x Digital Optical & COAX Inputs
- Analog Stereo and Speaker Level Inputs
- Input Priority for SMART Priority Switching
- Subwoofer Output
- Wolfson Digital Analog Converter (DAC) For Audiophile Performance
- AudioControl Patented AccuBASS™ Bass Response
- 12v Trigger Input • Bridgeable • Headphone Input
- Dimensions: 8.5"W x 5.4"D x 2.9"H
- Weight: 6.0lbs (2.7kg)
- Midnight Black finish
- Sierra White available to special order



RRP  
R 17 990,00



## Compact Home Audio Amplifiers (cont')

### RIALTO 600

#### 2.1 Channel Compact Amplifier and DAC

##### Features

- 2 Channels x 100 Watts at 8 Ohms
- 2 Channels x 200 Watts at 4 Ohms
- Preamp Volume Control Via IR or RS 232
- Stable Down to 3.6 Ohms
- Bridgeable Mono Block at 400 Watts
- 2 x Digital Optical & COAX Inputs and Analog Stereo Inputs
- Subwoofer Output
- Wolfson Digital Analog Converter (DAC) For Audiophile Performance
- Source Switching Via IR or RS 232
- AudioControl Patented AccuBASS™ Bass Response
- Crossover • 12v Trigger Input • Bridgeable • Headphone Input
- Remote Control Included
- Dimensions: 8.5"W x 5.4"D x 2.9"H
- Weight: 6.0lbs (2.7kg)
- Midnight Black finish
- Sierra White available to special order



RRP  
R 18 990,00

### BIJOU 600

#### 2.1 Channel Zone Amplifier and DAC

##### Features

- 2 Channels x 100 Watts at 8 Ohms
- 2 Channels x 200 Watts at 4 Ohms
- Preamp Volume Control Via IR or RS 232
- Stable Down to 4 Ohms
- Bridgeable Mono Block at 400 Watts
- 2 x Digital Optical & COAX Inputs and Analog Stereo Inputs
- Subwoofer Output
- Wolfson Digital Analog Converter (DAC) For Audiophile Performance
- Source Switching Via IR or RS 232
- AudioControl Patented AccuBASS™ Bass Response
- Crossover • 12v Trigger Input • Bridgeable • Headphone Input
- 1U ½ Rack Size With Rack Mounts, TV Mounts and Wall Cavity Box Mount Options
- Remote Control Included
- Midnight Black finish
- Dimensions: 8.50"W x 7.51"D x 1.73"H
- Weight: 6.0lbs (2.7kg)



RRP  
R 18 990,00

### BIJOU 600 Mounting Options

Part Number	Mounting Option	Description
RM-209	Single rack mount kit	Comprises of two custom end plates including a single space filler plate to lock one Bijou 600 into a 1U rack space. Screws included.
RM-210	Dual rack mount kit	Comprises of two Bijou end plates and two middle joining plates to mount two Bijou 600's together in a 1U rack space. Screws included.
RM-211	Mounting brackets	Two Bijou 600 mounting ears to allow the Bijou 600 to be installed on walls or other fixtures where the Bijou 600 requires flat mounting in confined spaces.
RM-212	In-wall black box	In-wall box with perforated rear panel. Uses metal & plastic electrical boxes, retro & new construction, up to 3/4" wallboard. Cut-out: 264mm x 365mm
RM-213	Component mounting plate	Component mounting plate. Fits a 50-400mm VESA mount. Large 9" x 11" (229mm x 279mm) breadboard mounting platform

RRP
TBA
TBA
TBA
TBA
TBA

Audio Analysers

**SA-3052 (special order)**

**Realtime Analyser**

**Features**

- Internal Battery Pack with Intelligent Charger
- Parallel Printer Port for Hard Copy and Documentation
- Soft Carrying Case with Storage for Mikes and Cables
- Never Loses Memories or Programming
- Affordable, Accurate, Professional-Grade Real Time Audio Analyser
- Self-contained, No computer required
- Thirty Bands (25Hz-20kHz) plus Broadband SPL
- Six Non-Volatile Memories plus Averaging
- Discrete Fourth-Order ANSI Class II Filters
- Digital SPL Display (0.1dB resolution)
- Built-in Digital Pink Noise Generator
- Calibrated Microphone Included
- Dimensions: 10"W x 12.75"D x 4.1"H
- Weight: 11.5lbs (5.2kg)



RRP  
TBA

**SA-4100i**

**iOS Test and Measurement Microphone**

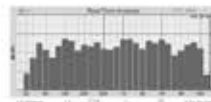
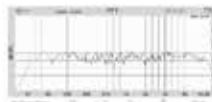
The SA-4100i is a calibrated, full range, omni-directional test and measurement microphone for direct connection to iOS devices running iOS 5.0 or later. With SA-4100i and the AudioControl Mobile Tools app, you will be able to analyse the acoustics of any environment with high resolution and precision, using the processing power of your iPhone®, iPod® touch or iPad®. SA-4100i makes set up of any sound processor a breeze, too, letting you see the acoustical spectrum and take action! SA-4100i includes a windscreen and a handy carrying pouch.

**Compatibility**

- iPhone 5, iPhone 5C, iPhone 5S
- iPhone 6, iPhone 6 Plus
- iPod Touch 5th generation
- iPad mini, iPad mini 2, iPad mini 3
- iPad Air, iPad Air 2
- iPad 4th generation

**Mobile Tools App**

The included Mobile Tools app supports the full capabilities of the SA-4100i microphone with five powerful modules, including RTA, FFT, SPL, Polarity and the proprietary DQ-61 Delay module. Mobile Tools is available as a free download on the App store.



RRP  
TBA